

Mold making for small parts!



We start with a special RTV silicone mold putty. Mix two parts by hand. The Plug is made from Basswood glued together in layers, then cut, carved and sanded to shape, then it is primed.

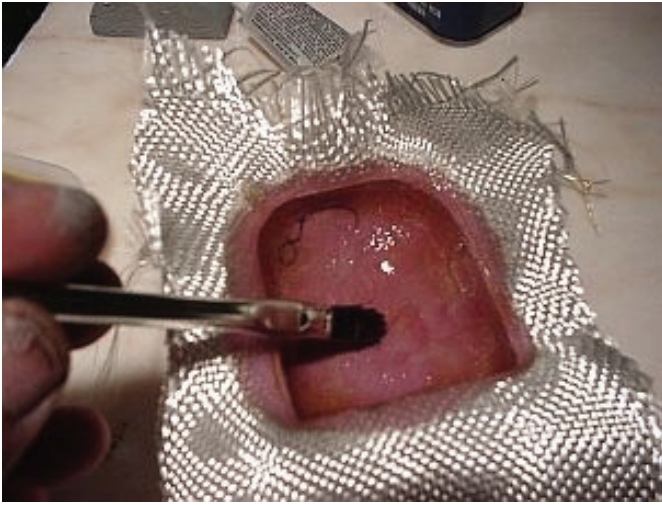
The putty is pressed over the part and worked in, 5 minutes later the mold is dry and ready for use! It does not stick so you don't need release agents.

Liquid mold agent is available for more detail work.



The mold is now ready to lay glass into. 20z. cloth is used along fiberglass resin.

The matt conforms nicely to the mold dry.



The cloth is then wetted in the mold enough to fill weave. Work out the air bubbles as it cures (about 10 min.)

After about an hour you pop the part with ease, trim sand and fill any imperfections and you have your part! In this case Scoops for the Naval version of the NH-90!

